

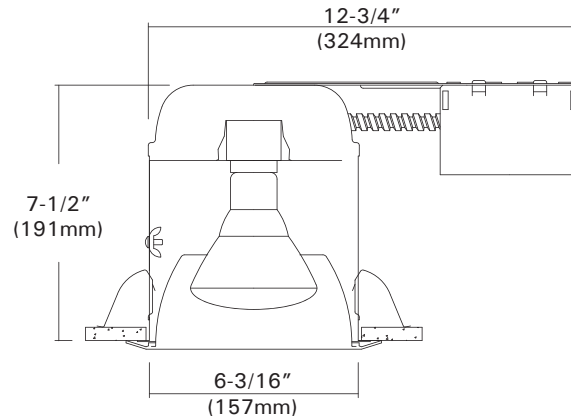
IC-706RAT

120V Line Voltage

6" 100W Super IC Type Remodel Housing For Incandescent

Catalog #		Type
Project		Date
Prepared by		

INCANDESCENT



DESCRIPTION

The IC-706RAT is a high wattage 6" aperture remodel housing for 100W incandescent lamps.

APPLICATION

The IC-706RAT is designed for insulated ceilings and can be in direct contact with insulation material. The AIR-TIGHT housing design prevents airflow through the ceiling, helping save on heating and cooling costs. The IC-706RAT offers a wide choice of trim types, including reflector, lensed and wall wash trims.

DESIGN FEATURES

Ceiling Cut-out : 6-1/2"
Lamp, Max, Watt. : 100W A19/R40/R30/PAR38/PAR30

◦ Housing

- Single wall aluminum housing.
- 7-1/2" height allows use in 2"X8" joist construction.
- Housing adjusts for ceilings up to 1/2" thick.

◦ Junction Box

- Listed for through branch circuit wiring. (Max. 8 No 12 AWG 90°C branch circuit conductors. (4 in, 4 out))
- (5) 1/2" knockouts with true pry-out slots and (4) knockouts with Romex cable clamp.
- Ground wire provided on J-box.

◦ Remodel Clips

- 4 remodel clips secure housing and accommodates 1/2" and 5/8" ceiling materials.

◦ Socket

- Medium base porcelain with nickel-plated copper screw shell.
- Snaps into bracket for consistent lamp positioning.

◦ Lamp

- Lamp ratings based on trim selected - See trim page for more details.

◦ Thermal Protector

- Self-resetting thermal protector in the housing deactivates fixture if overheating occurs due to improper lamping or insulation.

* Listing

- ETL listed for damp location.
- ETL listed for feed through.

• Optional "Quick Connect" Push-in wire connectors.

- Three "Quick Connectors"
- Pre-installed push-in wire connectors for fast and easy wiring.

• Compliance

- Washington State Energy Code.
- New York State Energy Conservation Construction Code.
- Certified AIR-TIGHT Under ASTM E283.

Trims

6" Incandescent Trims For

DL-106, DL-106R, IC-206AT, IC-206RAT, IC-706AT, IC-706RAT

Catalog #		Type
Project		Date
Prepared by		

INCANDESCENT

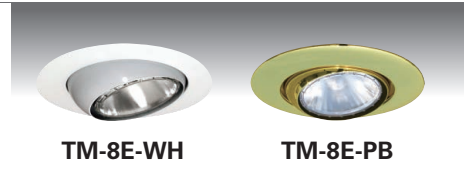
TM-3

Open Trim
PAR30-75W Max.,
R30/BR30-65W Max.
 White Metal Trim Ring
 O.D : 8"



TM-8E

Eyeball
PAR30L/BR30 - 75W Max.
 White Metal Trim Ring
 O.D : 8-1/8"



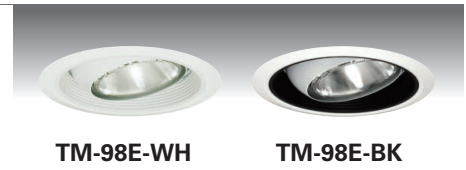
TM-4

Open Trim
NON-IC : PAR38/R40-150W Max.
 White Metal Trim Ring
 O.D : 8"



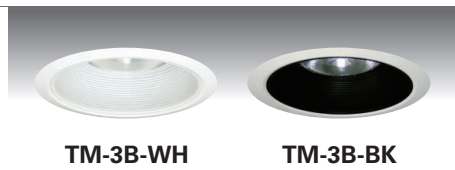
TM-98E

Regressed Eyeball w/ Baffle
PAR30L/BR30 - 75W Max.
 White Plastic Trim Ring
 O.D : 7-1/2"



TM-3B/TM-3BF TM-3BP (For Lexan)

Metal Baffle Trim
PAR30/R30 - 75W Max.
 White Plastic Trim Ring
 O.D : 7-1/2"
 *Symbol (BF) is for self-flange



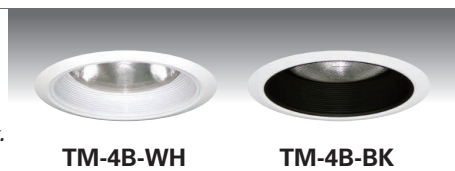
TM-38E

Eyeball w/ Baffle
PAR30L/R30 - 75W Max.
 White Metal Trim Ring
 O.D : 8-1/8"



TM-4B/TM-4BF TM-4BP (For Lexan)

Metal Baffle Trim
NON-IC : PAR38/R40-150W Max.
 White Plastic Trim Ring
 O.D : 7-1/2"
 *Symbol (BF) is for self-flange



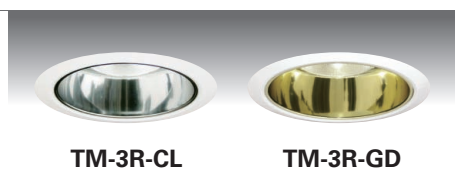
TM-52

Wall Wash
NON-IC : A19 - 60W Max.
IC : A19 - 40W Max.
 White Metal Trim Ring
 O.D : 8-1/8"



TM-3R

Specular Reflector
PAR30/R30-75W Max.
 White Plastic Trim Ring
 O.D : 7-1/2"



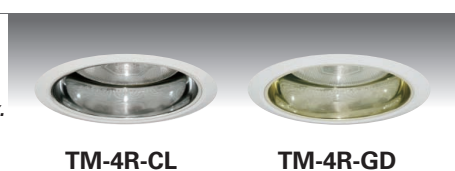
TM-54B

Wall Wash w/ Baffle
NON-IC : PAR30/R30-75W Max.
IC : A19 - 40W Max.
 White Plastic Trim Ring
 O.D : 7-1/4" (Only)



TM-4R

Specular Reflector
NON-IC : PAR38/R40-150W Max.
 White Plastic Trim Ring
 O.D : 7-1/2"



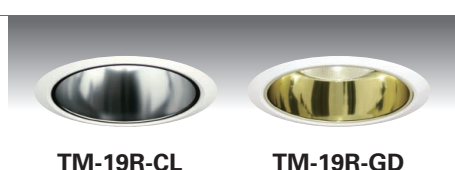
TM-54R

Wall Wash w/ Reflector
NON-IC : PAR30/R30-75W Max.
IC : A19 - 40W Max.
 White Plastic Trim Ring
 O.D : 7-1/4" (Only)



TM-19R/19RAT

Specular Cone Reflector
NON-IC : A19 - 100W Max.
IC : A19 - 60W Max.
 White Plastic Trim Ring
 O.D : 7-1/2"
 *Symbol (AT) is for Air-tight trim



TM-5/TM-5P TM-15P (w/ Reflector)

Shower Fresnel lens
NON-IC : A19 - 60W Max.
IC : A19 - 40W Max.
 White Metal Trim Ring
 O.D : 8-1/8"
 *Symbol (P) is for Lexan Trim



TM-11

Baffle w/ Reflector
NON-IC : A19-100W Max.
IC : A19 - 60W Max.
 White Plastic Trim Ring
 O.D : 7-1/2"



TM-6/TM-6P TM-16P (w/ Reflector)

Shower Drop Opal lens
NON-IC : A19 - 60W Max.
IC : A19 - 40W Max.
 White Metal Trim Ring
 O.D : 8-1/8"
 *Symbol (P) is for Lexan Trim



Trims

6" Incandescent Trims For

DL-106, DL-106R, IC-206AT, IC-206RAT, IC-706AT, IC-706RAT

Catalog #		Type
Project		Date
Prepared by		

INCANDESCENT

TM-7/TM-7P
TM-17P (w/ Reflector)
 Shower Albalite Lens
 NON-IC : A19 - 60W Max.
 IC : A19 - 40W Max.
 White Metal Trim Ring
 O.D : 8-1/8"
 *Symbol (P) is for Lexan Trim



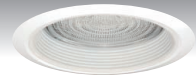
TM-7-WH

TM-630R
 Reflector w/ Regressed Gimbal
 PAR30/R30 - 75W Max.
 White Plastic Trim Ring
 O.D : 7-1/2"



TM-630R-CL

TM-42B
 Baffle w/ Fresnel Lens
 NON-IC : A19 - 60W Max.
 IC : A19 - 25W Max.
 White Plastic Trim Ring
 O.D : 7-1/2"



TM-42B-WH



TM-42B-BK

TM-638R
 Reflector w/ Regressed Gimbal
 PAR38/R40 - 150W Max.
 White Plastic Trim Ring
 O.D : 7-1/2"

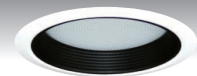


TM-638R-CL

TM-43B
 Baffle w/ Albalite Lens
 NON-IC : A19-60W Max.
 IC : A19 - 25W Max.
 White Plastic Trim Ring
 O.D : 7-1/2"



TM-43B-WH



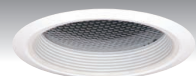
TM-43B-BK

TM-330
 Gimbal Ring
 PAR30-75W Max.
 R30/BR30-65W Max.
 White Metal Trim Ring
 O.D : 8"

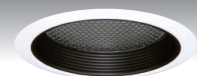


TM-330-WH

TM-44B
 Baffle w/Convex Prismatic Lens
 NON-IC : A19-60W Max.
 IC : A19 - 25W Max.
 White Plastic Trim Ring
 O.D : 7-1/2"



TM-44B-WH



TM-44B-BK

TM-338
 Gimbal Ring
 NON-IC : PAR38-150W Max.
 IC : PAR38-75W Max..
 White Metal Trim Ring
 O.D : 8"

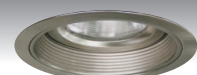


TM-338-WH

TM-630B
 Baffle w/ Regressed Gimbal
 PAR30/R30 - 75W Max.
 White Plastic Trim Ring
 O.D : 7-1/2"

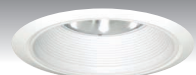


TM-630B-WH



TM-630B-SN

TM-102F/102F-SP
 Cone Full Baffle w/ Retention Clip
 NON-IC : BR30-85W Max.
 A19-100W Max.
 IC : PAR30/R30-75W, BR30-90W
 Self Flanged Trim
 O.D : 7-1/2"
 *Symbol (SP) is for Torsion Springs



TM-102F-WH

TM-638B
 Baffle w/ Regressed Gimbal
 NON-IC : PAR38/R40 - 150W Max.
 White Plastic Trim Ring
 O.D : 7-1/2"

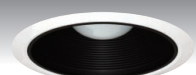


TM-638B-WH



TM-638B-MO

TM-102B/102B-SP
 Cone Full Baffle w/ Retention Clip
 NON-IC : BR30-85W Max.
 A19-100W Max.
 IC : PAR30/R30-75W, BR30-90W
 White Plastic Trim Ring
 O.D : 7-1/2"
 *Symbol (SP) is for Torsion Springs



TM-102B-BK

ORDERING INFORMATION

Choose the catalog / finish codes that best suit your needs and enter it on the appropriate line.

TRIM MODEL	REFLECTOR	BAFFLE	METAL RING
CL	:Clear	WH	:White
WH	:White	BK	:Black
GD	:Gold	SN	:Satin Nickel
MA	:Matte Platinum	AN	:Antique Nickel
CP	:Champagne	AC	:Antique Copper
PR	:Pewter	MO	:Mocha
HC	:Haze Clear	CA	:Cappuccino
		CH	:Chrome
		UN	:Natural Steel
		PB	:Polished Brass

Examples:
 TM-3-WH = White Open Trim Ring
 TM-42B-BK-WP = Fresnel Lens w/ Black Baffle
 TM-630R-GD-WP = White Gimbal Ring w/ Gold Reflector
 TM-4B-UN-UN = Natural Steel Trim Ring w/ Natural Steel Baffle

- ◆ Available with metal rings (7-1/2" O.D).
- ◆ All trims are damp location, Lens trims are wet location listed.

PLASTIC RING OPTIONS

WS : 7-1/4" O.D (White)
 WO : 7-7/8" O.D (White)